



Setting Up DT01v2 with D-point software

1. Download the correct D-point driver from Vivitek.eu

<http://www.vivitek.eu/products/education-projectors/>

These models use the following D-point version

D755WTI (not compatible with laser module)

- D-point software version 1.1.1.3 for Windows
- D-point software version 1.1.1.4 for Mac

D755WTIR

- D-point software version 2. 2.3.1.8 for Windows
- D-point software version 2. 2.3.0.7 for Mac

D758USTIR

- D-point software version 2. 2.3.1.8 for Windows
- D-point software version 2. 2.3.0.7 for Mac

Please note that these models are not compatible with D-point software and need the Novo-pointer software

D756USTi

D759USTi

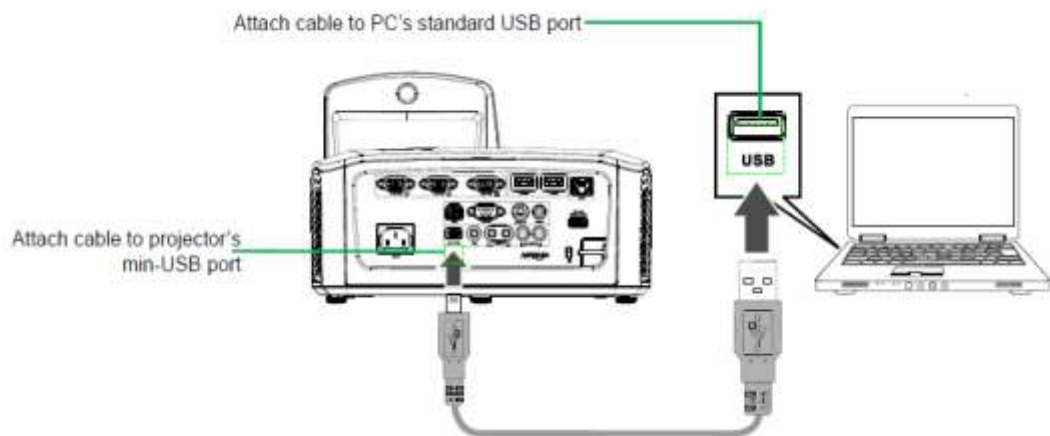
Follow these steps when installing the software.

Install the D-point software and follow the steps.

2. Connect projector to PC

Connect the Mini USB cable to the projector and your computer.

Make sure that you have installed the D-point software before you plug in the USB cable.



When you connect the USB for the first time Windows will install the driver.

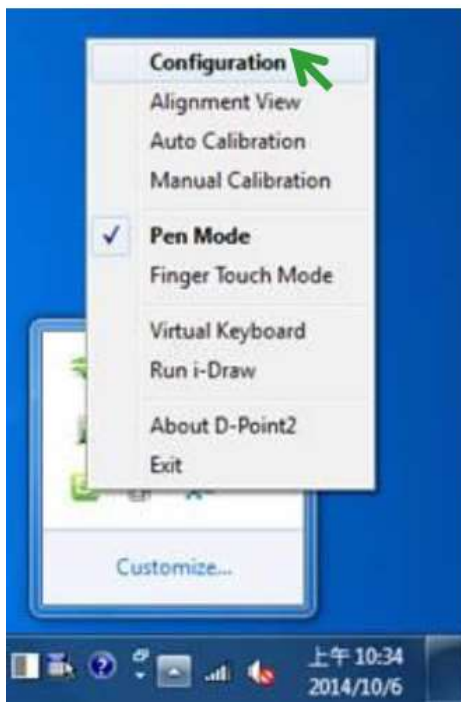
Please wait until windows is finished, after installation is completed you will get an notification that the projector is connected.



3. Open the D-point software and select the correct settings

Select pen mode and click configuration.

(Pen mode is used for calibration even if you want to use Finger mode)



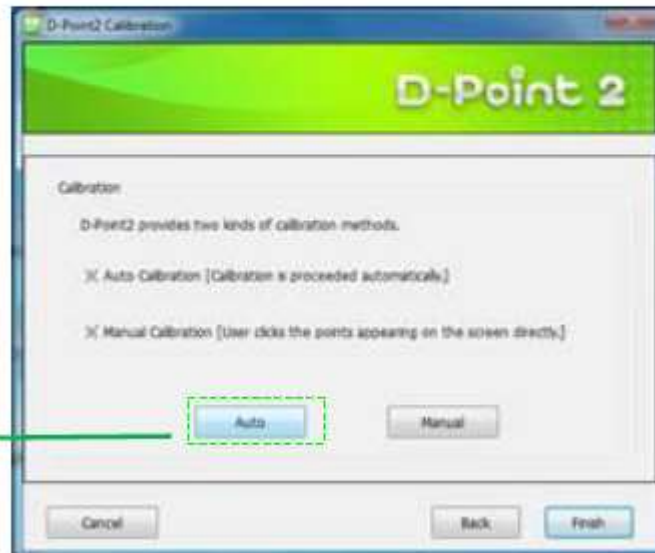
Select all the correct settings and press next



4. Calibration

Chose Auto Calibration

1. Auto



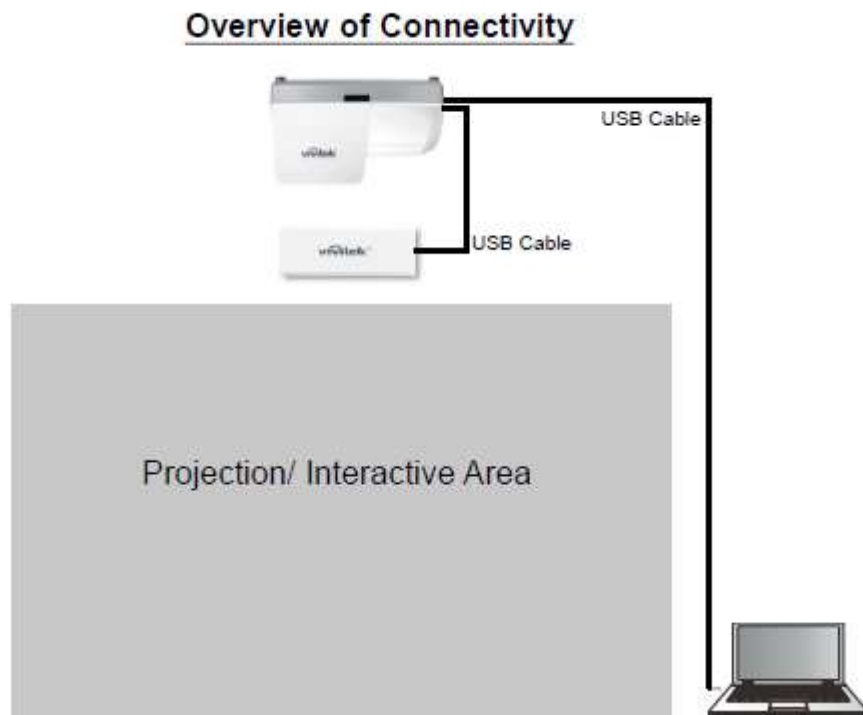
After Auto calibration is done press the Finish button.

With the interactive Pen you can check if the interactivity works.



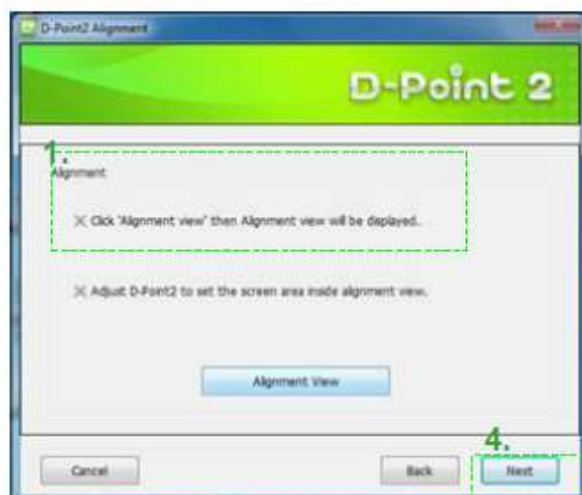
Interactive Pen

5. Connect the USB cable of the laser module.

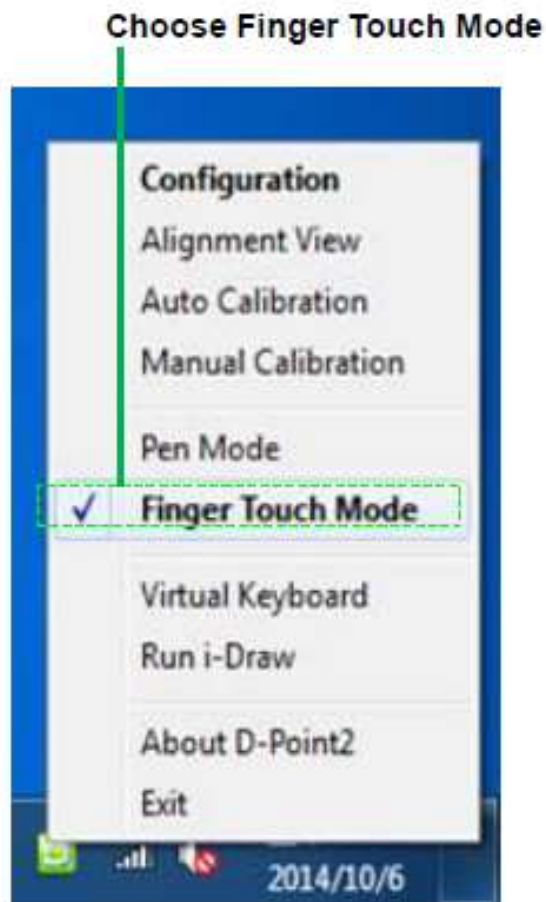


Use the D-point alignment view to adjust the laser module. More details about alignment view can be read from the user manual.

User manual can be found on the green CD or downloaded from www.vivitek.eu



6. Change the settings in D-point software from Pen mode to Finger mode.



The setup is now complete.

If the Finger mode is not accurate then go back to step 3 and select Manual calibration.

Driver not installed message.

When you receive the message **Driver not installed** it usually means something went wrong during installation.

In this case you need to uninstall the D-point software. In Windows that can be done in the control panel (Control Panel\Programs\Programs and Features.)

You also must delete the folder called D-point from your C: drive.

You can usually find this folder on C:\Program Files\Vivitek\D-Point 2

From our web site you can download the latest D-point version.

<http://www.vivitek.eu/products/education-projectors/>

Make sure that you have installed the D-point software before you plug in the USB cable.