



# **i-Draw**

## Software Manual

Copyright © Vivitek corporation. All Rights Reserved.

The contents of this manual can be changed for product enhancement.

Part of or all of this manual cannot be changed or transmitted to other parties without permission of Vivitek

Information of i-Draw

The latest information and software, please contact local sales representative.

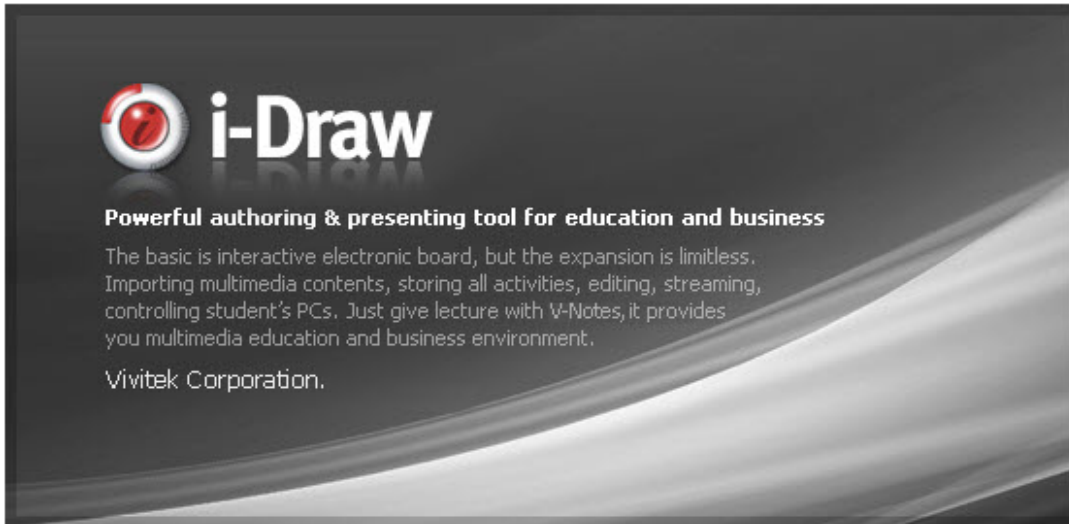
# INDEX

Chapter 1. Introduction.....	1
Chapter 2. Circumstances .....	2
A. Cautions Before Use.....	2
B. PC requirements.....	2
Chapter 3. Installation.....	3
A. Software Installation.....	3
Chapter 4. Executing i-Draw .....	6
A. Executing i-Draw with i-Draw icon .....	6
B. Executing i-Draw with program menu .....	6
C. Execute i-Draw with D-Point menu.....	7
Chapter5. Screen Constitution and Main Functions.....	8
A. type of Toolbar.....	8
B. Toolbar type and position.....	8
C. Floating toolbar.....	9
D. Description of Tools in Floating Toolbar.....	9
(1) Browsing Main Menu.....	9
(2) Selecting Color and Pen thickness .....	9
(3) Switching Function .....	10
(4) Choose a Transparent Mode, Pen and Diagram .....	10
(5) Creating a Note .....	11
(6) Page Up/Down .....	11
(7) Magnifying.....	11
(8) Recording.....	12
(9) Eraser Tool .....	12
E. Description of Fixed Toolbar .....	12
(1) Browsing Main Menu.....	12
(2) Creating a Note .....	13
(3) Choose a Color.....	13
(4) Pen thickness control.....	13
(5) Transparent Mode.....	13
(6) Select Pen or Diagram.....	14
(7) Choose an Eraser.....	15
(8) Page Up/Down and Note list.....	15
(9) Magnifying.....	15
(10) Recording.....	16
(11) Switching to Windows Mode .....	16
(12) Objects control mode .....	16

F. Description of Main Menu .....	17
Chapter 6. Applications .....	18
A. Importing documents .....	18
B. Application of Clip Art .....	19
C. Note list and delete .....	21
D. Save and Print Note .....	22
E. Save and Open Presentation .....	23
F. Object .....	24
G. Use an Eraser Function .....	25
Chapter 7. Extra Functions .....	26
A. Virtual Keyboard .....	26
B. Spot Light .....	26
C. Blind .....	28
Chapter 8. Configurations.....	29
A. Folder.....	29
B. Note.....	29
C. Dual Display .....	30
D. Recording(1) For accurate recording operation, you can set attributes of recording function. ....	30
E. Volume .....	31
F. Option .....	31
G. Version Information .....	32
Chapter 9. Uninstall i-Draw.....	33
A. Uninstall i-Draw using Windows Program menu.....	33
B. Uninstall i-Draw using Control Panel of Windows .....	33
Chapter 10. Notice.....	34

### Chapter 1. Introduction

'i-Draw' is board software optimized to D-Point. You will have more effective lecture with delicate writing and various convenient tools of 'i-Draw' and D-Point.



'i-Draw' has two representative features.

1. Digital Writing Function
2. Contents Authoring Function

'i-Draw' provides fast and stable writing speed as it optimized to D-Point.

Enjoy powerful presentation, education and contents authoring with 'i-Draw'.

**Chapter 2. Circumstances****A. Cautions Before Use**

'i-Draw' supports Windows XP and Vista, and other OS, Mac, Lynux are not supported. It is also operated with D-Point. Necessarily, execute this program with D-Point.(i-Draw is executed only when D-Point is run in your PC. Please execute D-Point prior to run i-Draw. )

**B. PC requirements**

	<b>Minimum requirement</b>	<b>Recommended Requirement</b>
CPU	Pentimum 4, 1GHz	Dual Core
RAM	512M Byte	1G Byte
HDD	70M Byte	100M Byte
Graphic Card	128M Byte	128M Byte
OS	Windows XP, Vista, 7	Windows XP, Vista, 7
Others	Microphone, Speaker	Microphone, Speaker

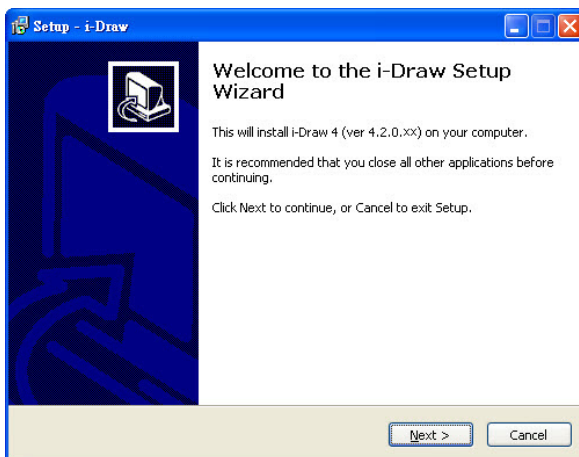
### Chapter 3. Installation

#### A. Software Installation

Insert CD that came with D-Point into CD-ROM drive and click “install i-Draw”, and then please select the installation language

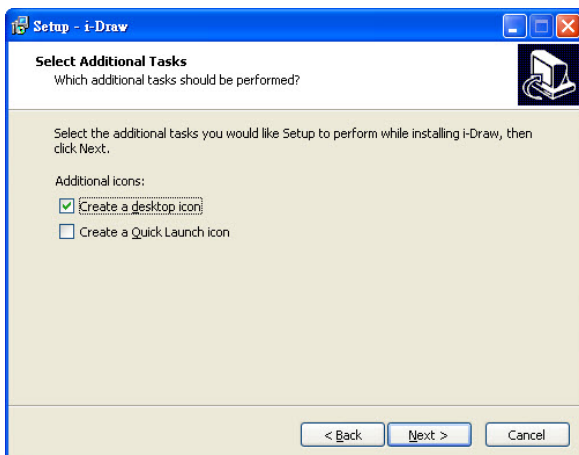


Installation Wizard pops up and click ‘next’.

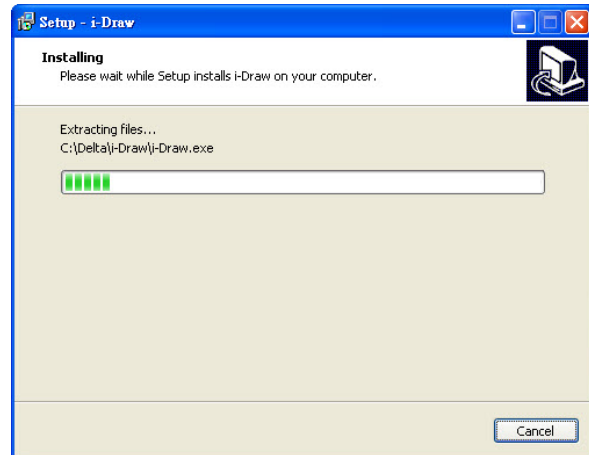
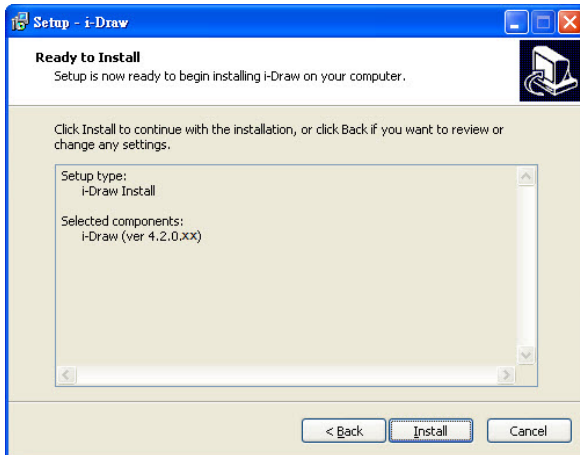


At additional function application, click one of the blanks for creating an icon. Then click ‘next’.

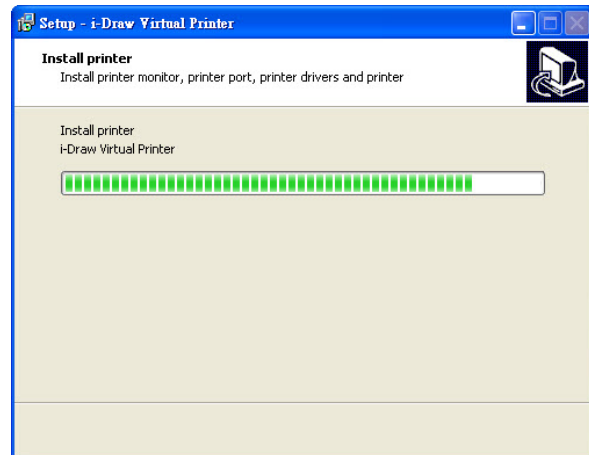
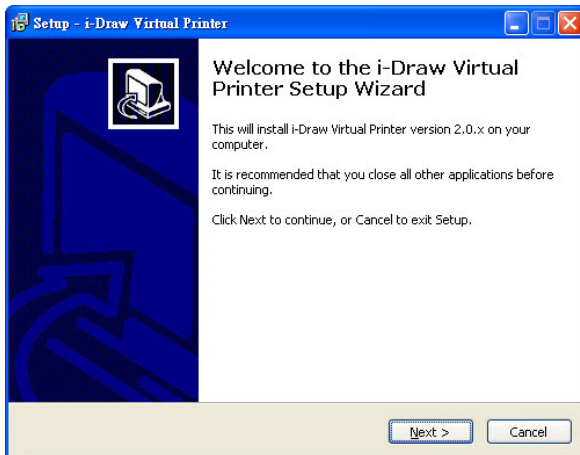
→ In this stage, you can create desktop icon or quick launch icon. Select on your preference and click “Next”



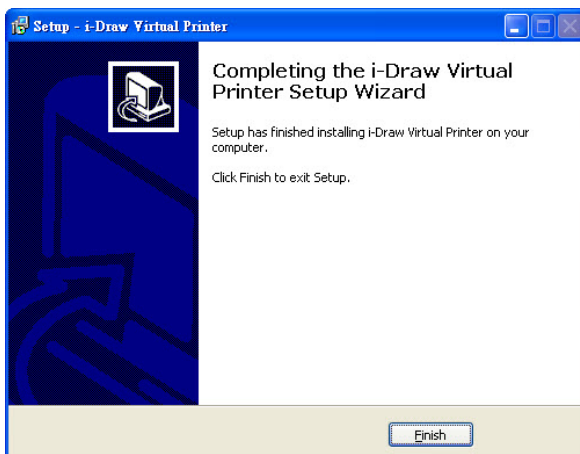
Now, it is ready to install 'i-Draw'. Click 'installation' menu.



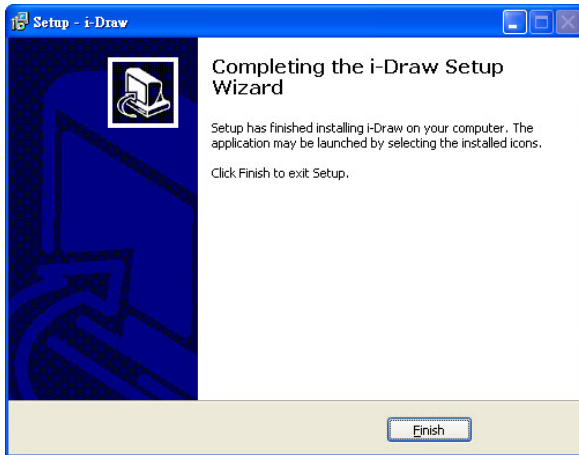
Install "i-Draw Printer" clicking "next"



"i-Draw Printer" installation was completed. Please click the Finish button.



The installation is completed. Click 'Finish'.





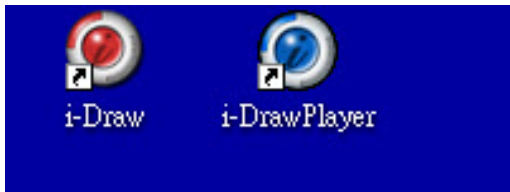
### Chapter 4. Executing i-Draw

#### Notice

Execute D-Point prior to run i-Draw. If you execute i-Draw before D-Point, an error message is pop up and i-Draw will not work.

#### **A. Executing i-Draw with i-Draw icon**

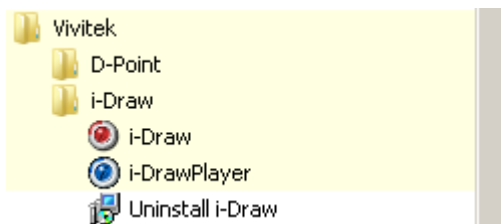
If you select 'Create a desktop icon' or 'Create a quick launch icon' during installation, i-Draw icon is created on background or quick launch tray. You may execute the i-Draw by clicking one of these icons.



#### **B. Executing i-Draw with program menu**

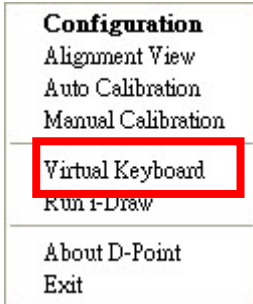
(1) In case that the i-Draw icon is removed in windows background or you did not select 'Create a desktop icon' and 'Create a quick launch icon' during installation, you can execute the i-Draw through program menu. Follow instructions below.

- a. Click the "start" button on window task bar.
- b. Click 'all programs'.
- c. Click 'Vivitek' in the browsed program menu.
- d. Click 'i-Draw' menu.
- e. i-Draw menu will be browsed and click 'i-Draw' icon and then i-Draw will be executed.



### **C. Execute i-Draw with D-Point menu**

(1) i-Draw can be executed by clicking i-Draw icon in D-Point menu. When D-Point is executed D-Point icon is created on windows taskbar tray. Click D-Point icon with D-Point pen, and D-Point menu will be browsed. In the menu you can find i-Draw icon and click it. i-Draw will be executed.



### Chapter5. Screen Constitution and Main Functions

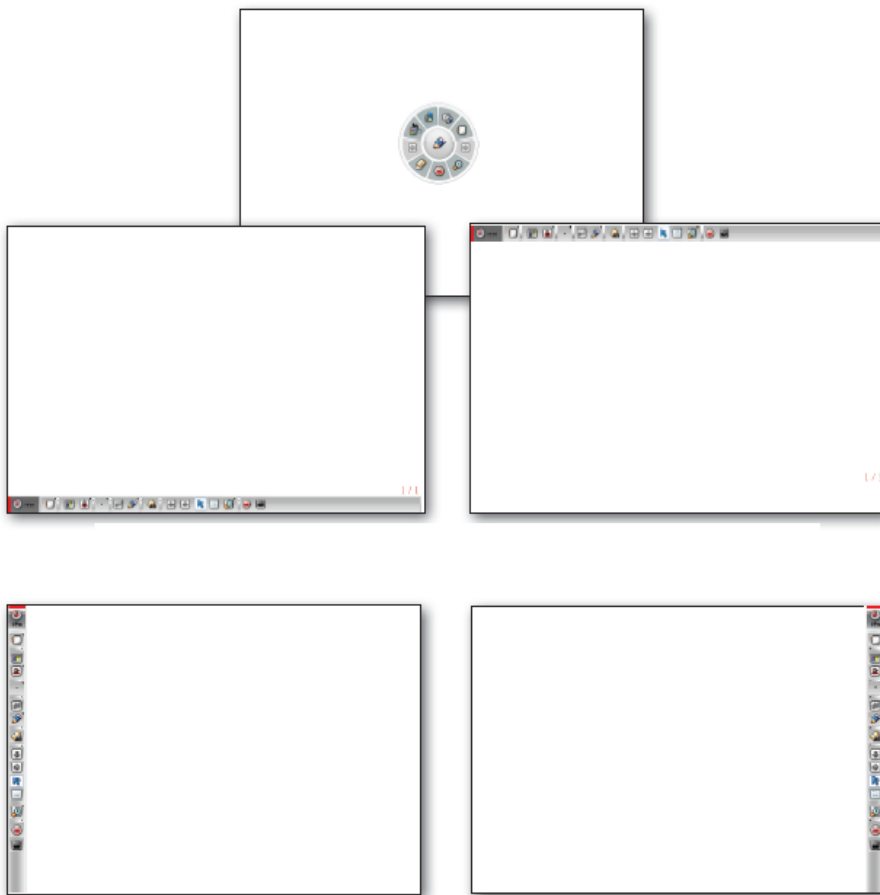
#### A. type of Toolbar

##### Types of Toolbar

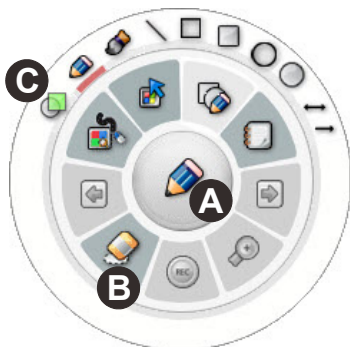
Toolbar of i-Draw can be located any position according to user's preference. There are straight toolbar and floating tool bar. Straight toolbar can be located any side of window and floating toolbar can be floated to any position by the control of user.

Toolbar type and position are selectable in the main menu of i-Draw and type & position of toolbar are stored when you quit i-Draw for next usage.

#### B. Toolbar type and position



### C. Floating toolbar



Floating toolbar comprises 3 sections A, B, C and each section is connected hierarchically.

A section has two functions

The first function is to show current tool now in use. If you select Pen tool of object tool, proper icon will be displayed.

The second function is to browse main menu of i-Draw. If you right – button –click in this area, main menu will be created.

B section :

Tools and functions of i-Draw are grouped according to their similarity and in the B section, icon for grouped tools and functions are listed.

During your usage, Diagram, eraser and mode switching tool are frequently used. For your convenience, these function group can be switched only by clicking corresponding icon,

In C section, detail function and tools are displayed.

When you click any icon in B section, corresponding icons are appears in section C.

If no selection actions in C section during 5 seconds, C section will be disappears.

### D. Description of Tools in Floating Toolbar



#### (1) Browsing Main Menu

To activate main menu on floating mode, Press A section for seconds with an D-Point pen or click right button of a mouse.







#### (2) Selecting Color and Pen thickness

When you click this icon, 16 kinds of color and 4 thickness of pen will be appeared in section C.

Click color or pen thickness on your preference.









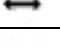



### (3) Switching Function

	When you press this icon during your presentation using i-Draw, Writing mode will be switched to windows mode so that you can run other application S/W of windows.
	In this mode, what you draw, clipart, or diagram can be treated as object. So you can rotate, enlarge, copy, paste the objects.
	You can use Pen and Mouse without switching mode specially.
	You can expand Note's size without any limitation.



### (4) Choose a Transparent Mode, Pen and Diagram

	When clicked, red underline is displayed and switched to transparent mode. In this mode, every new drawing is overlapped to background, diagram and drawings so that you can see bottom drawings. If you release transparent mode, click the icon once more.
	Pen tools. You can select pen type.
	Brush-pen. You can express thickness according to writing-speed.
	Straight line
	Rectangular
	Rectangular filled with color
	Circle
	Circle filled with color
	Straight line with arrow both ends
	Straight line with one arrow end



Creating note, creating clipart, importing document, capturing screen functions are grouped in this icon.

### (5) Creating a Note

	New note is created. Background color of note is set in "configuration menu"
	Chalkboard Background
	Music Note Background
	English Note Background
	Manuscript Note Background
	Graph Note Background
	Import any ordinary files.
	Insert clipart into note.
	Import every images available in P.C.
	Show Note List



### (6) Page Up/Down

Note Page Up and down. Activate only when two or more notes are created.



### (7) Magnifying

Magnifying selected note region or enlarge all note area to 100% to 400%. Size and position of All objects in the note varies according to magnifying ratio.

<b>100%</b>	Return to original note size
<b>200%</b>	Magnifying note to 200%
<b>300%</b>	Magnifying note to 300%
<b>400%</b>	Magnifying note to 400%
	Magnifying selected region. If you want to return to original size, click "100"
	Magnifying and reducing the screen by each grade



### (8) Recording




What you written on the note during your lecture is recorded in movie file format

※ What you written on the note during your lecture is recorded in movie file format.



### (9) Eraser Tool

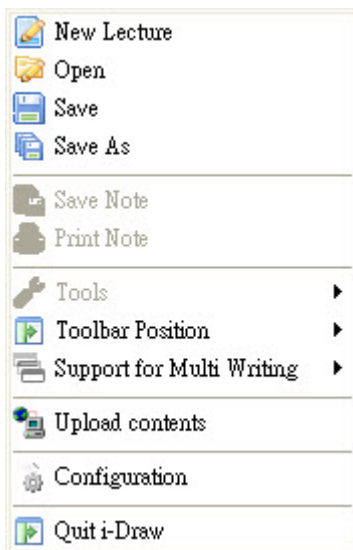
Tools for erasing object in the note. Erase all and partially are supported.

	Erase all objects in the note
	Erase object selectively
	Erase Region : objects in selected region will be deleted

## ***E. Description of Fixed Toolbar***

Toolbar can be positioned 4 sides of window, but shape and function are same.

### (1) Browsing Main Menu



To activate main menu, press the i-Draw icon for seconds with D-Point pen or click right button of PC mouse.

### (2) Creating a Note

Click the icon marked below for 0.3 second and the menu creates a note is opened. To create a note checked default, click the icon shortly or the bar next to the icon.



	New note is created. Background color of note is set in "configuration menu"
	Chalkboard Background
	Music Note Background
	English Note Background
	Manuscript Note Background
	Graph Note Background
	Import any ordinary files.
	Insert clipart into note.
	Import every images available in P.C.
	Show Note List
	Second menu option.

### (3) Choose a Color

Click the color icon or a color browsing bar next to the color icon then color menu will be opened.



### (4) Pen thickness control

Click the pen thickness icon in the picture and then current pen thickness will appear. To control pen thickness, click pen thickness control icon next to pen thickness icon. Pen thickness control slide will appears and drag the slider.



### (5) Transparent Mode

When clicked, normal writing mode is switched to transparent mode. In this mode, every new drawing is overlapped to background, diagram and drawings so that you can see bottom drawings through upper drawing. If you want to release transparent mode, click the icon once more.










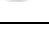
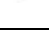
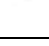


### (6) Select Pen or Diagram

Pen/diagram menu is browsed by two ways. The first is to press Pen/Diagram icon for a while and the second is to click browser icon next to Pen/Diagram icon.



You can select diagrams or pen in the browsed menu. When pen or diagrams are selected, selected icon appears in Pen/Diagram icon.





	Pen tools. You can select pen type.
	Brush-pen. You can express thickness according to writing-speed.
	Straight line
	Rectangular
	Rectangular filled with color
	Circle
	Circle filled with color
	Straight line with arrow both ends
	Straight line with one arrow end
	Second menu option.

### (7) Choose an Eraser

Press eraser icon for a while and then eraser sub menu will be appeared or clicking browser menu bar next to eraser icon do the same.






After you select the type of eraser in sub menu, the selected eraser icon will appear in the eraser icon area.

	Erase all objects in the note
	Erase object selectively
	Erase Region : objects in selected region will be deleted
	Second menu option.

### (8) Page Up/Down and Note list

Function to move previous or next page. This function is activated only when two or more notes are created.



	Move to previous note
	Move to next note
	Note list : in the note list window, you can open wanted note by double clicking or delete note selectively

### (9) Magnifying

Magnifying selected note region or enlarging all note area to 100% to 400%. Size and position of All objects in the note varies according to magnifying ratio.





### (10) Recording

What you written on the note during your lecture is recorded in movie file format in this mode. By means of this function, you can create lecture contents and make an on-line service.

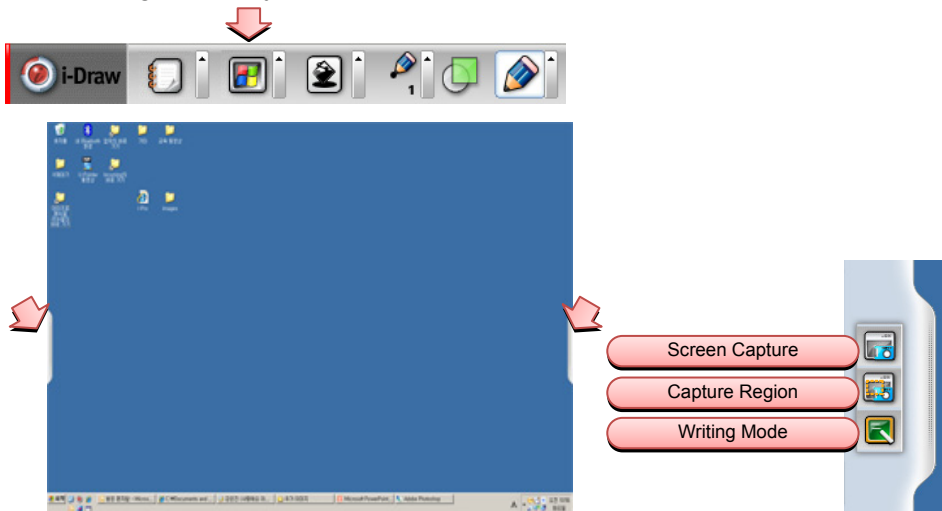


※ Windows Media Encoder provided by Microsoft should be installed to your computer to use recording function of i-Draw

	Record start icon: when clicked this icon becomes in-active mode for preventing double operation.
	Record stop icon: This icon becomes activated only when recording is initiated.

### (11) Switching to Windows Mode

Not quitting i-Draw, you can switch to Windows mode and run other application programs.

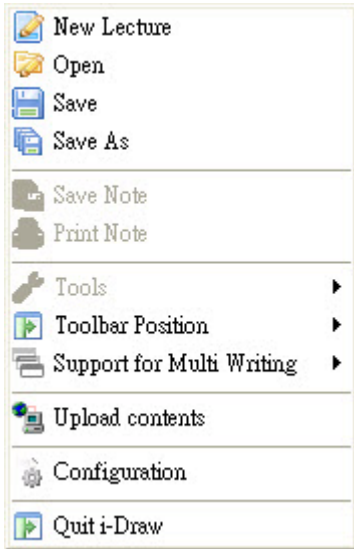


### (12) Objects control mode

In this mode, what you draw, clipart, or diagram can be treated as objects. So you can rotate, enlarge, copy, paste the objects



### F. Description of Main Menu



New Lecture : Start new presentation

Open : Open stored lecture notes

Save : Save current presentation

Save as : Save current note with designate name

Save note : Save note in picture file format

Print note : Print note

Tools : selecting virtual keyboard, spotlight, blind.

Toolbar Position : selecting toolbar position in windows frame

Configuration : setting configuration of i-Draw

Quit i-Draw : finishing i-Draw

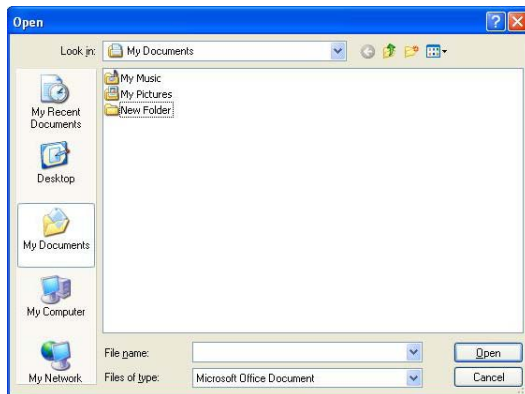
### Chapter 6. Applications

#### A. Importing documents

i-Draw provides 5 kinds of backgrounds (please refer to *Chapter 5. D-(5) on page 11 and E-(2) on page 13*) for your convenience during presentation. In addition to this, default 350 number of clipart and your Microsoft Office Documents can be imported for your presentations.

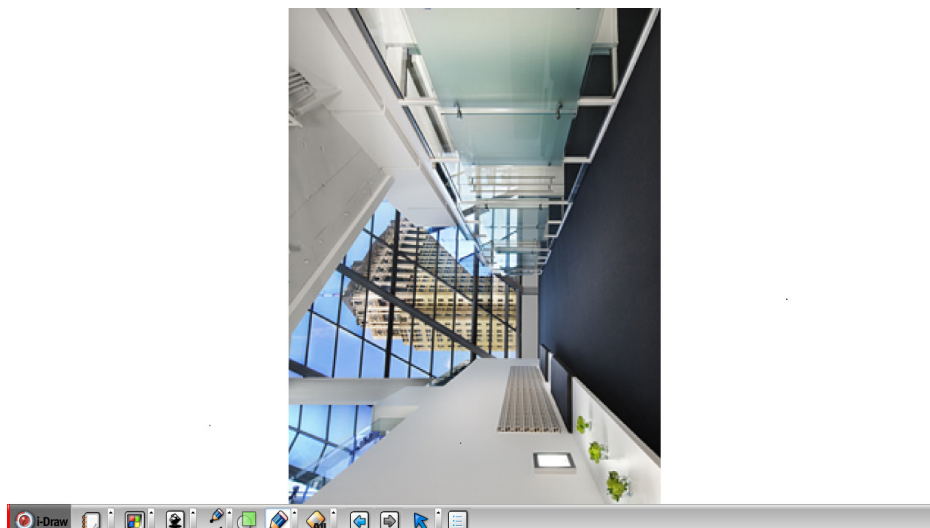
To import Microsoft office documents, follows the instructions hereafter.

- a. As described in *D-(5) on page 11 and E-(2) on page 13 of chapter 5*, click “import documents”.
- b. A dialog box will be appeared as following and the file imported will be opened accordingly



- c. When the selected file opened, click “print” in menu as you do print actually
- d. Terminate “every opened applications” after completing “print” .

Printer was set as “i-Draw Printer” automatically as photo as below when you use “i-Draw”, Therefore, you can import every available documents regardless of “Windows mode” or “Intelligent mode” through printing in “i-Draw Printer”



e. To import Microsoft office documents, Microsoft Office should is necessary in your PC and works properly.

You can import “Office-Document” as well as “PDF file”

### B. Application of Clip Art

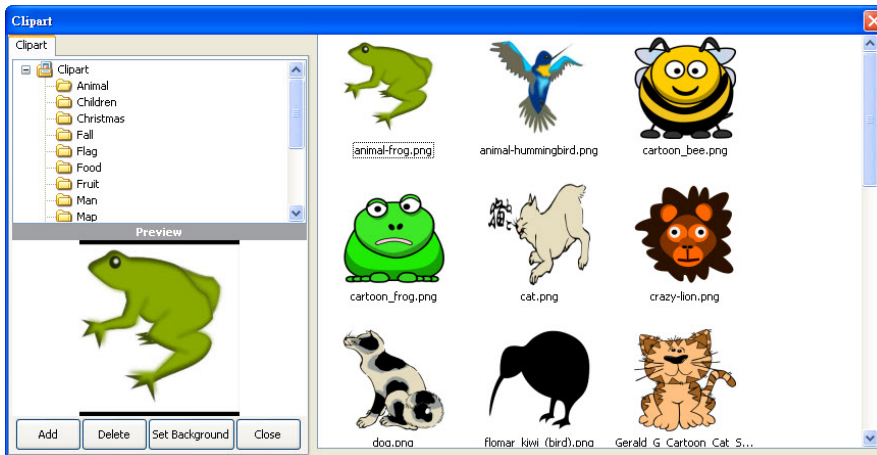
i-Draw provides basic cliparts for your presentations and interface for adding user clipart.

To use clipart, follow the instructions.

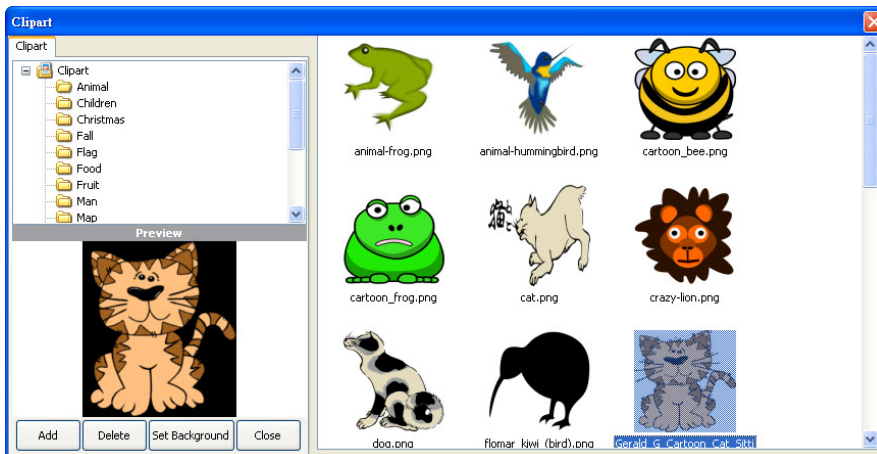
a. Click the clipart icon [clipart icon]. Refer to *Chapter5. D-(5) on page 11 and E-(2) on page 13.*

b. Clipart dialog box is opened

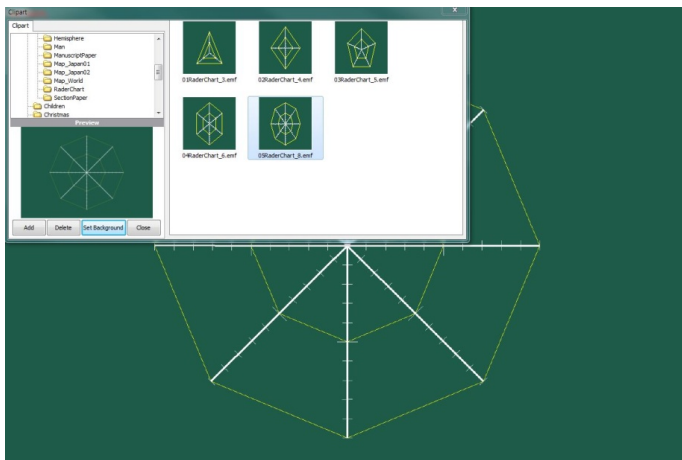
c. selecting clipart directory and then thumbnail of clipart is displayed on the right. If you click thumbnail, you can see magnified clipart in preview window.



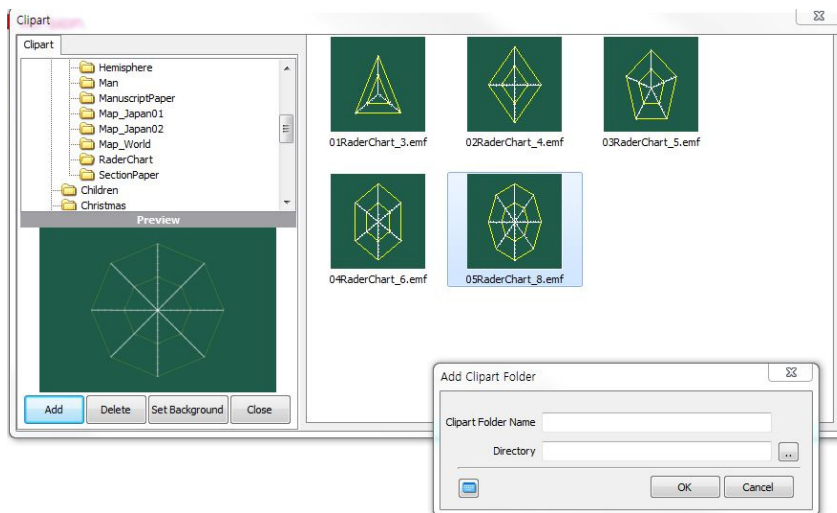
d. Double click clipart or drag one of the clipart into note area and then clipart is inserted into the note.



- e. To set clip art as a background, select a clipart and click 'set background' button. Only one clipart can be designated as background for each note.



- f. Adding clipart : Click 'Add' button to add user clipart to i-Draw clipart folder and then dialog box appears.

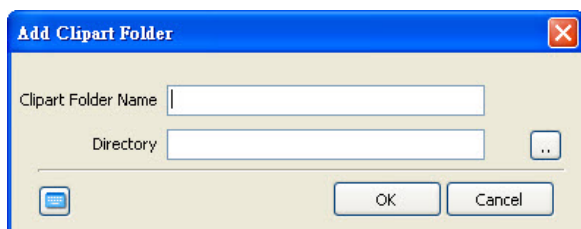


- g. Click Browser button [browser button icon] and then folder dialog box appears.

Designating clipart folder and input clipart folder name. Click "Confirm" button.

Clipart folder is now created in the i-Draw clipart directory.

Be sure sub folders of designated clipart folder is added to i-Draw clipart folder.



- h. Added clipart folder is available until when you delete the clipart folder

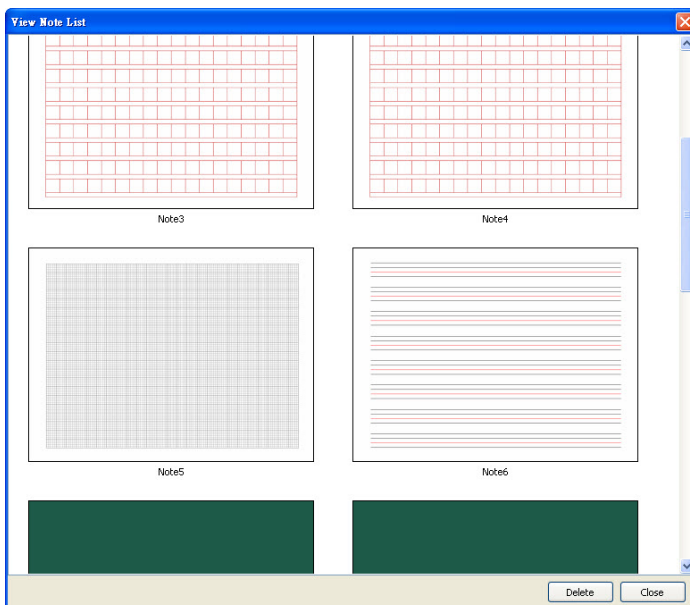
- i. To remove the added clipart folder, select and click 'delete'. But, the clip art provided by i-Draw is not deleted

### C. Note list and delete

- (1) During presentation, number of notes are created or prepared lecture notes are used. You can check total number of notes and current page in the right top region of note frame



- (2) Note List : As explained in *Chapter5. D-(5) on page 11 and E-(8) on page 15*, click and check all the notes created until now.

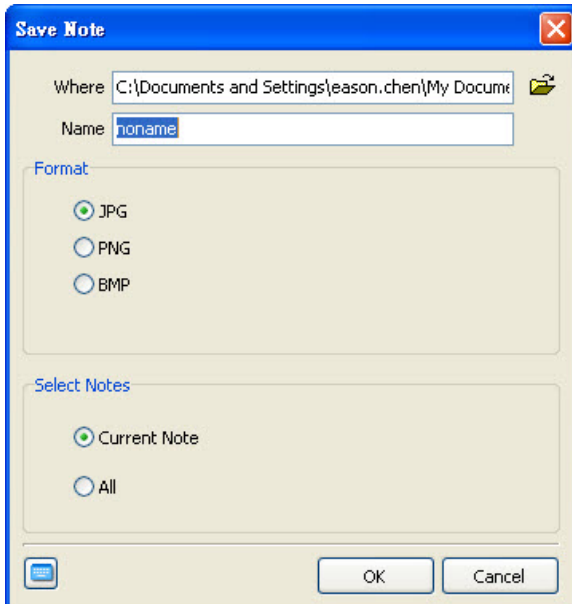


- (3) To move to selected note, double-click it with D-Point pen or mouse.  
(4) To delete note, select note to be deleted and click 'Delete' of the box.  
(5) To delete number of notes, use drag function of D-Point Pen or mouse. Drag a certain region so that the notes to be deleted are included in the region. Click 'Delete' button.



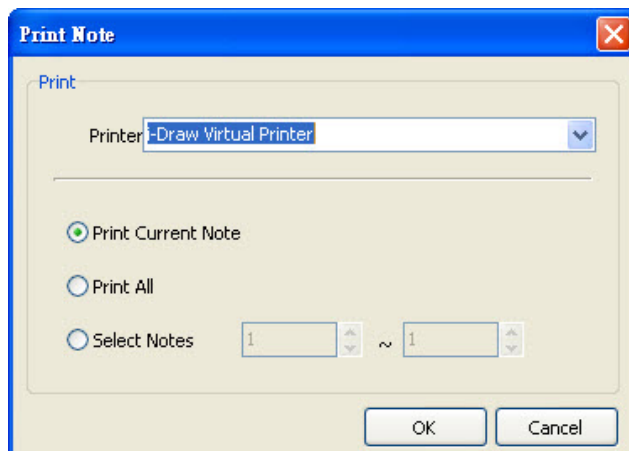
### D. Save and Print Note

#### (1) Save Note



- Your presentation notes can be saved as picture file format. Click main menu and 'Save note'. Refer to *Chapter5. F on page 17*
- Designate folder to be saved and input file name
- Select picture file format and select current note or all
- Click 'Confirm'.

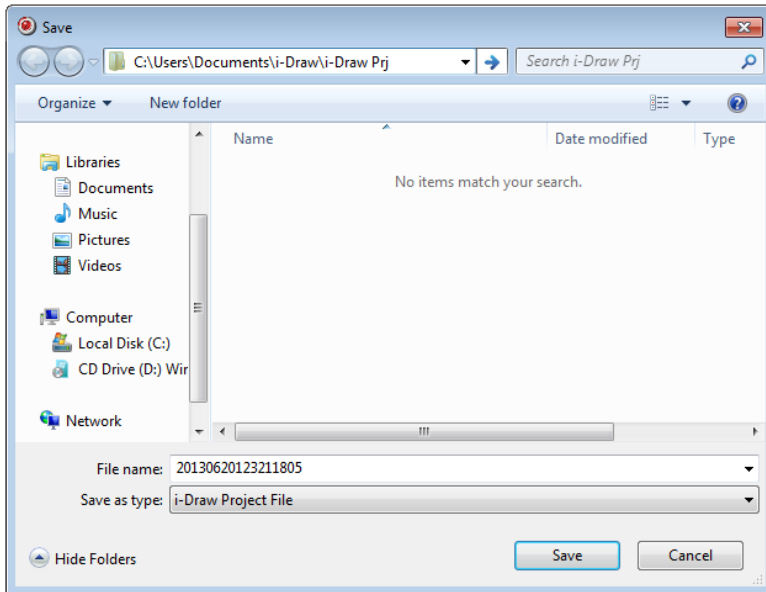
#### (2) Print Note



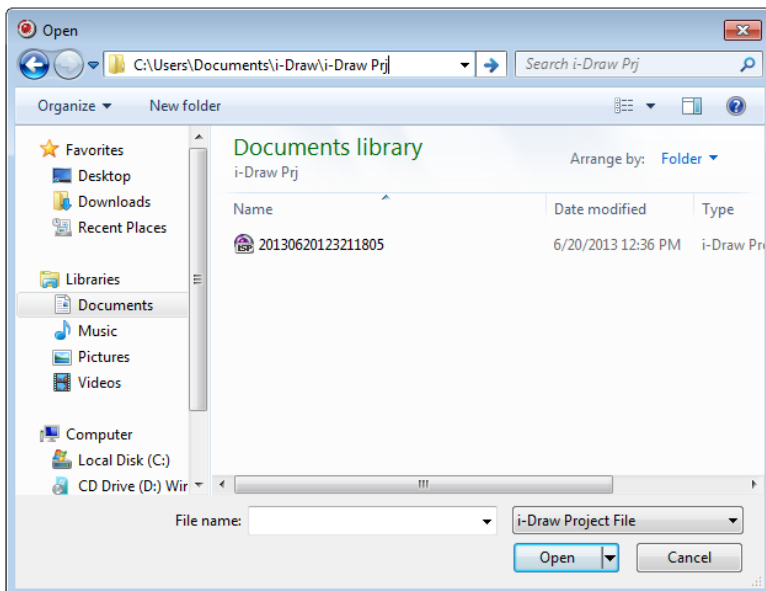
- Your presentation notes can be printed. Click main menu and 'Print Note'. Refer to *Chapter5. F on page 17*
- Select printer connected to your computer.
- Choose notes to be printed. You can select current note, all notes and selected notes using print option.
- Click 'Confirm'

### E. Save and Open Presentation

- (1) Your presentation is saved as a file and the file can be used for your other presentation using other PC. Only requirement of PC is that i-Draw is installed.
  - a. To save your presentation, click the 'save' in main menu. Refer *Chapter5. F on page 17*.
  - b. Dialog box will appear. In the dialog box, designate folder and input file name.  
Click 'Save', then file is saved on the folder in .ist file format.



- c. Open the folder in which the presentation is saved. You can find the file with i-Draw file icon.





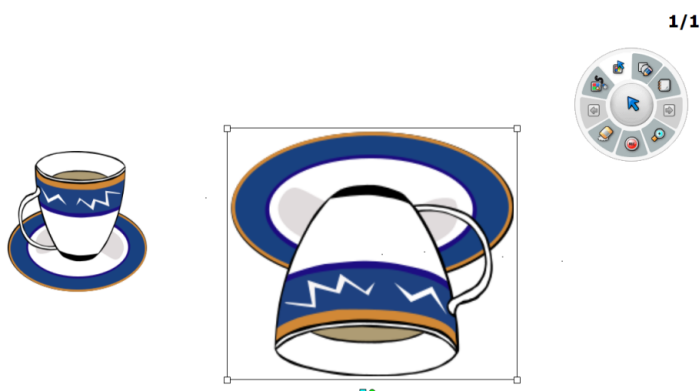
- d. To open the presentation, you can use windows search function or 'open' menu of i-Draw. When using windows search function, search presentation file in the folder and double click it.  
When using 'Open' menu of i-Draw, click 'Open' menu. Select file and click 'Open' button. Refer to *Chapter5. F on page 17*.

- (2) 'Save As' menu of i-Draw will support you to save current presentation with another name.
- (3) To start new presentation after finishing current presentation, click 'New Presentation' Menu and proceeds a new presentation. Refer to *Chapter 5. F on page 17*. Before new presentation is initiated, Dialog box that asks whether to save former presentation or not. Click 'Yes' or 'No'.

### F. Object

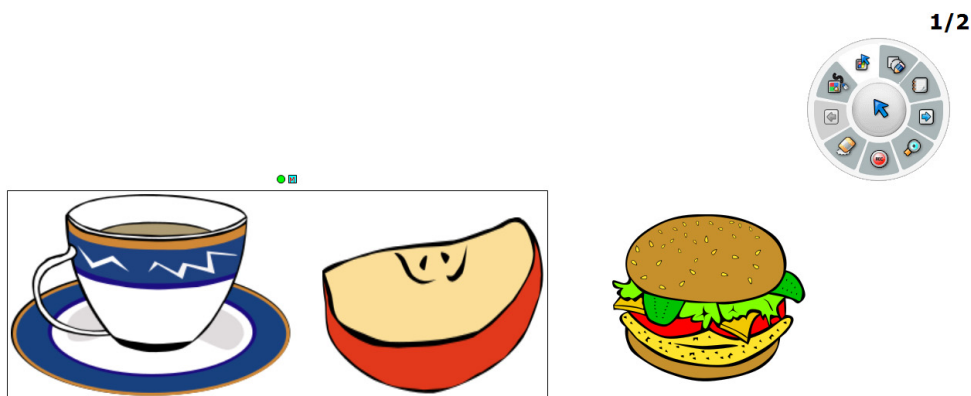
Clipart or your drawings can be treated as objects so you can adjust size, rotate, drag as you want.

- a. To switch to Object Control Mode, click 'object control menu' of toolbar. Refer to *Chapter 5. D-(2) on page 9 and E-(12) on page 16*.
- b. After entering Object Control Mode, the background color of menu is changed (  ) and the cursor shape becomes is In object select mode, the button is changed to (  ).
- c. Click the object you want to reshape; supporting lines around the selected object appears like Power Point Object. In this state, you can reshape the object.
- d. The below is sample image for showing reshape object. The original shape of cup is change in this mode.



- e. If you want to treat number of objects at the same time, like Power Point, drag some area in which target objects are included and reshape them.

Several objects are selected at once.



f. i-Draw provides object control popup menu. Click right button on the selected object area. Popup menu is appeared and control the objects.




- Cut: Cut a selected object.
- Copy: Copy a selected to
- Paste: Paste an object copied or cut.
- Delete: Delete selected object.
- Select all: Select all objects in current note.
- Reset to initial shape: Reset the selected object to initial shape.


### G. Use an Eraser Function

(1) i-Draw provides three types of eraser. Erase All, Erase Object, Erase Region


a. Erase all

Click 'Erase all' button[  ]. All clip art and writings are erased but background is not erased. Refer to *Chapter5. D-(8) on page 12 and E-(7) on page 15.*

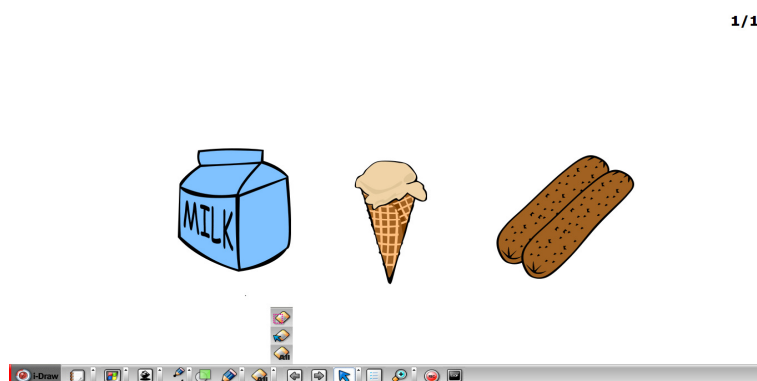
b. Erase object

Click 'Erase object'[  ] and click clipart or drawing on the note. The clipart or drawings will be erased respectively. Refer to *Chapter5. D-(8) on page 12 and E-(7) on page 15.*  
Refer to *Chapter6. F on page 24* to select objects.

c. Erase region

Click 'Erase region'[  ] and drag region in which clipart and drawings to be erased are included.

When click 'Erase region' and then shape of mouse cursor becomes cross( ). If dragged a region, the selected region is displayed as dotted rectangular. After dragging, all the objects in the rectangular are disappeared at once.



d. Erase by object menu

As explained in F-f, objects can be erased by clicking 'delete' function in object menu.

### Chapter 7. Extra Functions

i-Draw provides several functions to increase efficiencies during your presentation.

#### A. Virtual Keyboard

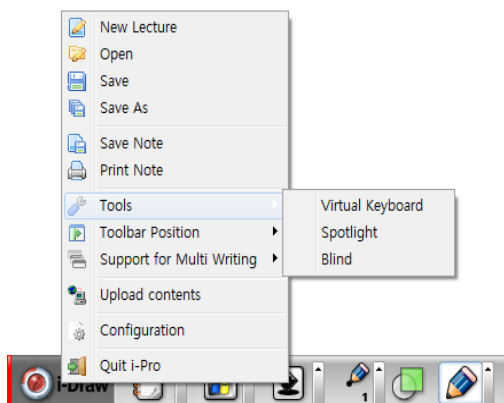
- (1) In some cases, you may need to input letters by means of keyboard during you D-Point. In this case, you can input letters using virtual keyboard that will appear on window.
- (2) Click virtual keyboard submenu in main menu of i-Draw. The virtual keyboard will be appeared on the window. Input letters by pressing virtual keyboard. Refer to *Chapter5. D-(1) on page 9 and E-(1) on page 12*

Virtual keyboard is activated.

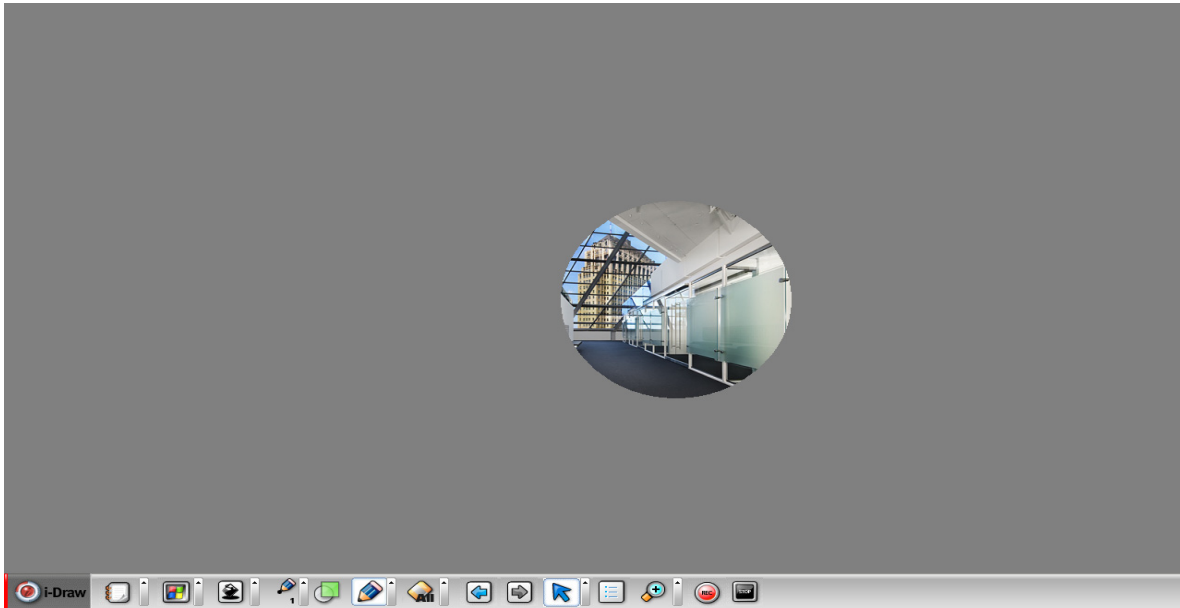


#### B. Spot Light

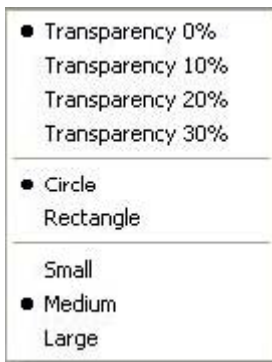
- (1) To attract audience's attention, emphasizing a target part of a note is necessary. A spot light function is provided in i-Draw.
- (2) Spot light function is activated by selecting 'Spot Light' function in Tool of main menu. Refer to *Chapter5. D-(1) on page 9 and E-(1) on page 12*.



(3) After spot light function is activated, color of note area becomes transparent dark gray and spot light will appear. You can move the spot light by dragging D-Point Pen.



(4) After the spot light function is activated, Spot light control and closing box will appear on right upper corner of note



Transparency 0% : 0% transparency of gray screen.

Transparency 10% : 10% transparency of gray screen

Transparency 20% : 20% transparency of gray screen

Transparency 30% : 30% transparency of gray screen

Circle : Spot light shape to be circle

Rectangle : Spot light shape to be rectangular

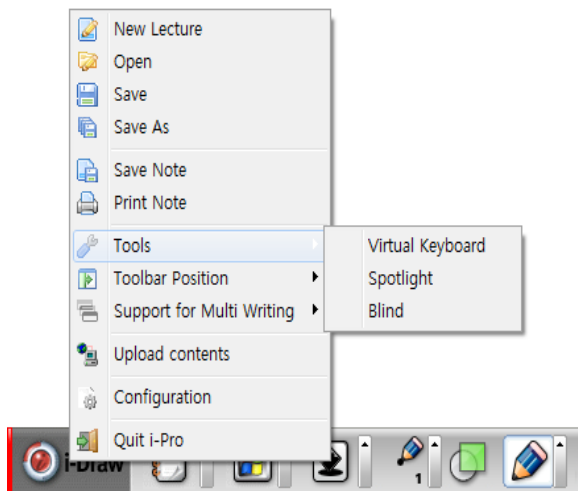
Small size : Small size of spot light

Medium size : Middle size of spot light

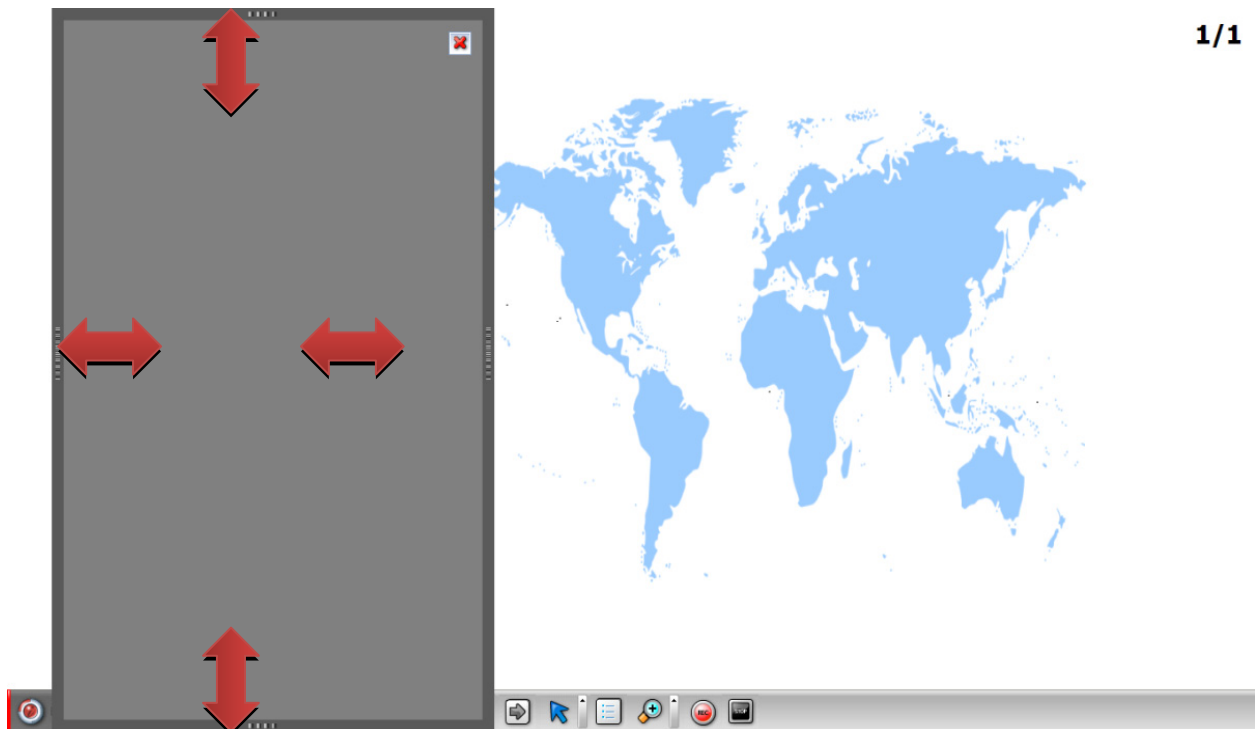
Large size : Large size of spot light

### C. Blind

- (1) Like a blind in the glass window, Blind of i-Draw blinds all screen area and open by dragging from side of window so that part of note is exposed.  
You can open note from any side of windows frame.
- (2) Click Blind function in Tools menu in main menu of i-Draw. And then all note is blinded and closing button will appear on right upper corner. Refer to *Chapter5. D-(1) on page 9 and E-(1) on page 12*



- (3) Place cursor to any edge of note frame, and then cursor image becomes both end arrow line. In this state, drag cursor. Note will be opened according to dragging.

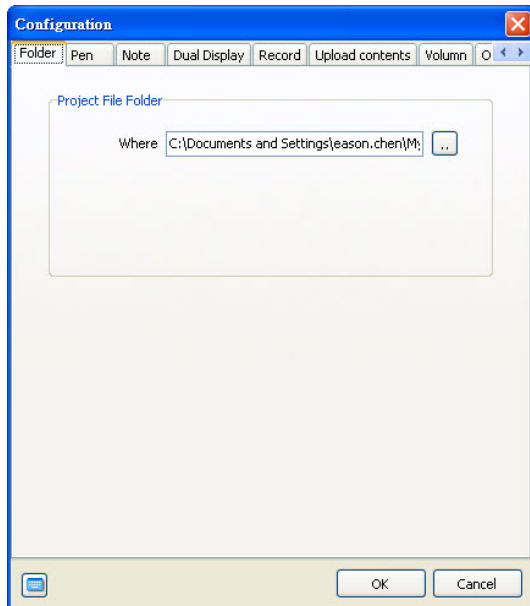


### Chapter 8. Configurations

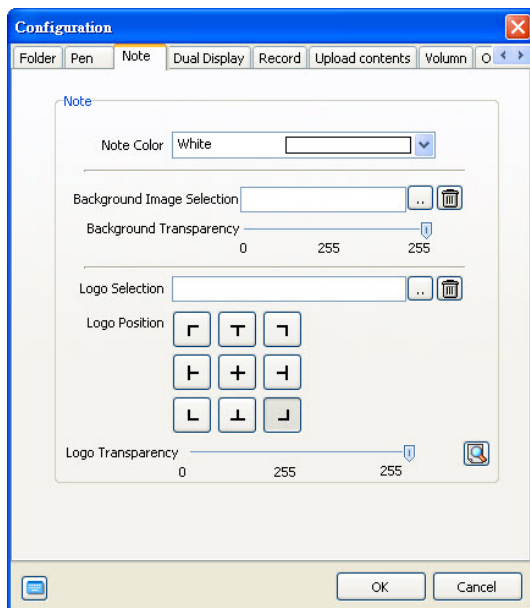
#### A. Folder

After i-Draw is installed in your PC, default folder to save note and presentation is 'i-Draw Prj' folder created under " Documents/i-Draw" directory. To change this folder, use Folder configuration.

In the dialog box, click 'folder' and designate folder in your preference.



#### B. Note

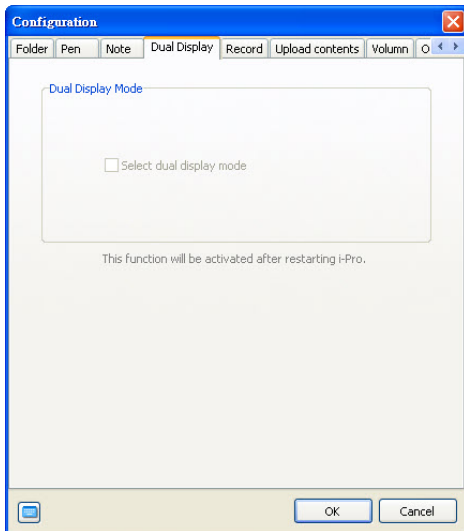


- (1) Background of color of new note is changed by this function. Click 'note' and change color. Default color of note is white.



### C. Dual Display

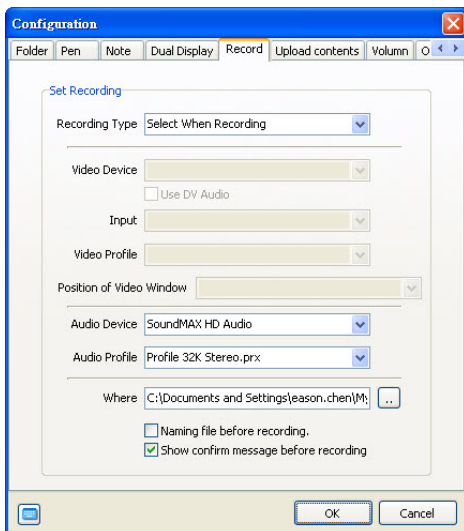
- (1) To use extended display, dual display should be selected. Dual Display mode enables you to use two wide range of writing area. To construct this mode, two display, D-Point is needed. Ask your D-Point dealer for more information.



### D. Recording(1) For accurate recording operation, you can set attributes of recording function.

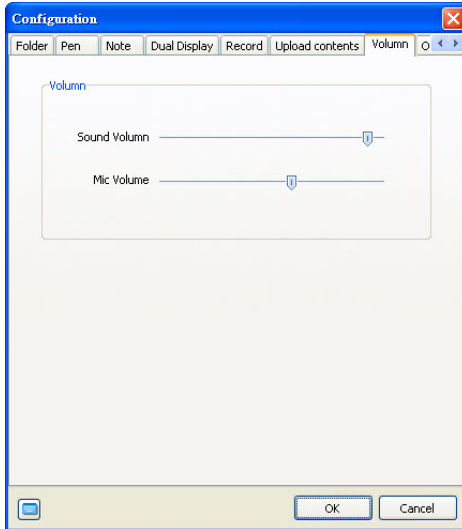
Default folder for saving presentation is 'i-Draw Contents' folder under Vivitek folder in root directory. To change folder, designate folder in the dialog box.

If you want to designate file name before recording, select 'Ask File Name before Recording'. If you check 'Confirm message before recording', confirm dialog box appear before recording.



### E. Volume

Mic and Speaker volume are set in this configuration. Slide volume and sound by dragging slide bar.

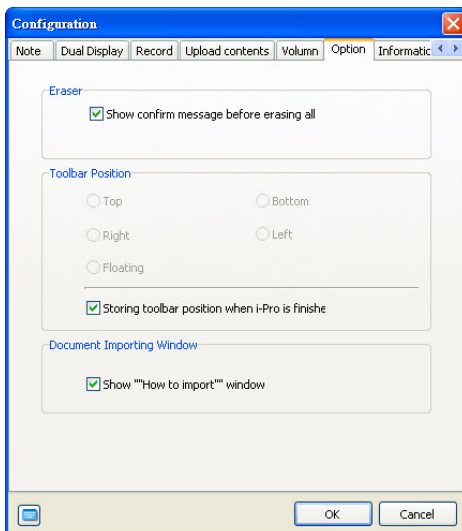


### F. Option

Two options are provided in the option menu.

- (1) Confirm message at 'Erase All': to prevent your mistake, confirm message box will appear when you click 'Erase All'
- (2) Set Toolbar location

You can place tool bar in 5 ways. Select toolbar position according to your preference. This toolbar position is saved when you check 'Storing Toolbar position when i-Draw is finished'



### G. Version Information

In the information dialog box, you can check i-Draw version information. If the version is not the last version, click 'Update' button.

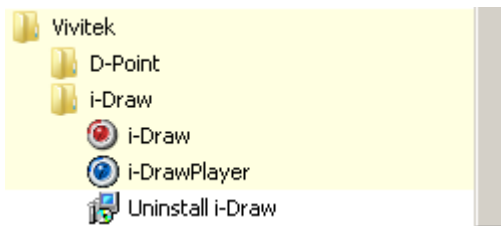


### Chapter 9. Uninstall i-Draw

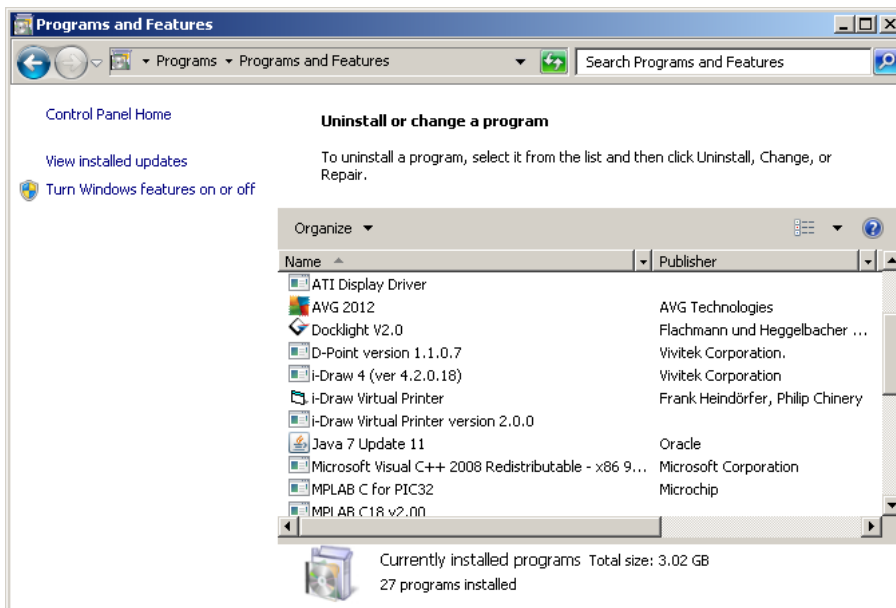
#### A. Uninstall i-Draw using Windows Program menu

In the programs menu of Windows, you can find Vivitek folder.. Click Vivitek folder and i-Draw folder consecutively, you can find 'Uninstall i-Draw' menu. Click it to uninstall i-Draw.

※Files created by users are not deleted even though you uninstalled i-Draw. If you want to remove these, use Windows Search Browser.



#### B. Uninstall i-Draw using Control Panel of Windows



Run 'Program Add/delete' in the 'Program Add/delete' in Windows Control Panel. Select i-Draw and click 'Delete'

**Chapter 10. Notice**

Copyright © Vivitek corporation. All Rights Reserved.

The contents of this manual can be changed for product enhancement.

Part of or all of this manual cannot be changed or transmitted to other parties without permission of Vivitek corporation.

Information of i-Draw

The late information and software, please contact local sales representative